



B/R Pride 1551 is the dam of Lot 5 and a pathfinder, donor dam with national prominence. Produced B/R Nationwide and \$60,000 flush sister to Nationwide at the TD Angus at Rishel Ranch Sale in 2017!

**5** WTR Payweight of Pride 725 

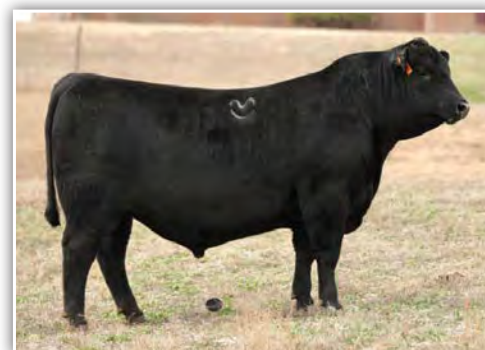
REG: #18835968 | DOB: 01/23/17 | TAT: 725

SIRE Basin Payweight 1682

DAM B/R Pride 1551  
 B/R 65R Genesis C A Future Direction 5321  
 Cliffsides G M Pride 3244 B/R Blackcap Empress 127  
 G A R Grid Maker  
 C V F Pride 024

ACT BW	86
ADJ WW	693
ADJ YW	1234
CE RATING	★★

CED	BW	WW	YW	MILK	SW
8	1.7	58	105	29	63.27
CW	MARB	RE	FAT	SF	SB
36	0.57	0.59	0.015	76.1	133.83



B/R Nationwide 69, the \$110,000 son of B/R Pride 1551 at the 2017 TD Angus at Rishel Ranch Sale

WTR Payweight of Pride 725...son of Basin Payweight 1682 by the nationally prominent, Pathfinder donor dam, B/R Pride 1551. This dam is a powerfully made cow and her offspring reflect that. Top 25% CED; Top 30% WW with fast growth to YW (Top 15%). She is feed efficient: Top 1% RADG and Top 4% DMI. Her carcass quality is exceptional: CW Top 35%; Top 4% for RE & \$G; Top 15% MB; 3% \$F, \$YG and Top 5% \$B..that's strength across the whole economic EPD range! This is one special cow. She has also left us 3 flush sisters to the Lot 5 bull and they are awesome! A heifer pregnancy, full sib to these animals, recently sold for \$17,000 and a 3/4 sib heifer pregnancy sold for \$35,000 at Hoffman Ranch, NE.

- Top 10% DOC: Top 15% RADG, DMI, MK, \$W, \$F; Top 20% YW; Top 25% WW, \$B; Top 35% CED; and Top 32% Tenderness